

测试报告

No. TSNEC1300041402

日期: 2013年01月24日 第1页,共5页

唐山钢铁集团有限责任公司
河北省唐山市路北区滨河路9号

以下测试之样品是由申请者所提供及确认: 冷轧低碳钢带

SGS工作编号: TP13-000138 - TJ
主要成份: C:0.04%;Si:0.02%;Mn:0.17%;P:0.018%;S:0.009%;Als:0.028%
型号: DC01
客户参考信息: 型号:SPCC、SPCC-SD、CS A、CS B、SAE1006、SAE1008
料号: 2Y79029ZP0Q1
批号: 2PQ0200581
样品接收日期: 2013年01月14日
测试周期: 2013年01月14日 - 2013年01月24日
测试要求: 根据客户要求测试
测试方法: 请参见下一页
测试结果: 请参见下一页
结论: 基于所送样品进行的测试, 镉、铅、汞、六价铬、多溴联苯(PBB)、多溴二苯醚(PBDE)的测试结果符合欧盟RoHS指令2002/95/EC的重订指令2011/65/EU附录II的限值要求。

通标标准技术服务有限公司
授权签名



Summer Bai 白林

批准签署人

备注: 根据客户申请, SGS出具了此中文报告, 英文版本可根据客户要求提供. (The Chinese test report is issued according to the applicant's request. The English version is available from SGS if further needed)

This document is issued by the Company subject to its General Conditions of Service printed overleaf, available on request or accessible at http://www.sgs.com/terms_and_conditions.htm and, for electronic format documents, subject to Terms and Conditions for Electronic Documents at www.sgs.com/terms_e-document.htm. Attention is drawn to the limitation of liability, indemnification and jurisdiction issues defined therein. Any holder of this document is advised that information contained hereon reflects the Company's findings at the time of its intervention only and within the limits of Client's instructions, if any. The Company's sole responsibility is to its Client and this document does not exonerate parties to a transaction from exercising all their rights and obligations under the transaction documents. This document cannot be reproduced except in full, without prior written approval of the Company. Any unauthorized alteration, forgery or falsification of the content or appearance of this document is unlawful and offenders may be prosecuted to the fullest extent of the law. Unless otherwise stated the results shown in this test report refer only to the sample(s) tested.

测试报告

No. TSNEC1300041402

日期: 2013年01月24日

第2页,共5页

测试结果:

测试样品描述:

样品编号	SGS样品ID	描述
1	TSN13-000414.001	银灰色金属板

备注:

- (1) 1 mg/kg = 0.0001%
- (2) MDL = 方法检测限
- (3) ND = 未检出 (< MDL)
- (4) "-" = 未规定

RoHS指令2011/65/EU

测试方法: 参考IEC 62321:2008:

- (1) 用ICP-OES测定镉的含量.
- (2) 用ICP-OES测定铅的含量.
- (3) 用ICP-OES测定汞的含量.
- (4) 用点测试法/紫外-可见分光光度计比色法测定六价铬的含量.
- (5) 用GC-MS测定PBBs(多溴联苯)和PBDEs(多溴二苯醚)的含量.

测试项目	限值	单位	MDL	001
镉(Cd)	100	mg/kg	2	ND
铅(Pb)	1000	mg/kg	2	ND
汞(Hg)	1000	mg/kg	2	ND
六价铬(Cr(VI))	-	-	◇	阴性
多溴联苯之和(PBBs)	1000	mg/kg	-	ND
一溴联苯	-	mg/kg	5	ND
二溴联苯	-	mg/kg	5	ND
三溴联苯	-	mg/kg	5	ND
四溴联苯	-	mg/kg	5	ND
五溴联苯	-	mg/kg	5	ND
六溴联苯	-	mg/kg	5	ND
七溴联苯	-	mg/kg	5	ND
八溴联苯	-	mg/kg	5	ND
九溴联苯	-	mg/kg	5	ND
十溴联苯	-	mg/kg	5	ND
多溴二苯醚之和(PBDEs)	1000	mg/kg	-	ND
一溴二苯醚	-	mg/kg	5	ND

This document is issued by the Company subject to its General Conditions of Service printed overleaf, available on request or accessible at http://www.sgs.com/terms_and_conditions.htm and, for electronic format documents, subject to Terms and Conditions for Electronic Documents at www.sgs.com/terms_e-document.htm. Attention is drawn to the limitation of liability, indemnification and jurisdiction issues defined therein. Any holder of this document is advised that information contained hereon reflects the Company's findings at the time of its intervention only and within the limits of Client's instructions, if any. The Company's sole responsibility is to its Client and this document does not exonerate parties to a transaction from exercising all their rights and obligations under the transaction documents. This document cannot be reproduced except in full, without prior written approval of the Company. Any unauthorized alteration, forgery or falsification of the content or appearance of this document is unlawful and offenders may be prosecuted to the fullest extent of the law. Unless otherwise stated the results shown in this test report refer only to the sample(s) tested.

测试报告

No. TSNEC1300041402

日期: 2013年01月24日

第3页,共5页

测试项目	限值	单位	MDL	001
二溴二苯醚	-	mg/kg	5	ND
三溴二苯醚	-	mg/kg	5	ND
四溴二苯醚	-	mg/kg	5	ND
五溴二苯醚	-	mg/kg	5	ND
六溴二苯醚	-	mg/kg	5	ND
七溴二苯醚	-	mg/kg	5	ND
八溴二苯醚	-	mg/kg	5	ND
九溴二苯醚	-	mg/kg	5	ND
十溴二苯醚	-	mg/kg	5	ND

备注:

(1) 最大允许极限值引用自指令2011/65/EU 附录II.

(2) ◇点测试法:

阴性= 未检测到六价铬, 阳性= 检测到六价铬;

(当点测试结果为阴性或无法确定时,将采用沸水萃取法作进一步的结果验证.)

◇沸水萃取法:

阴性= 未检测到六价铬

阳性= 检测到六价铬; 表明50 cm²表面积的被测试样品的沸水萃取液中六价铬的浓度等于或大于0.02 mg/kg

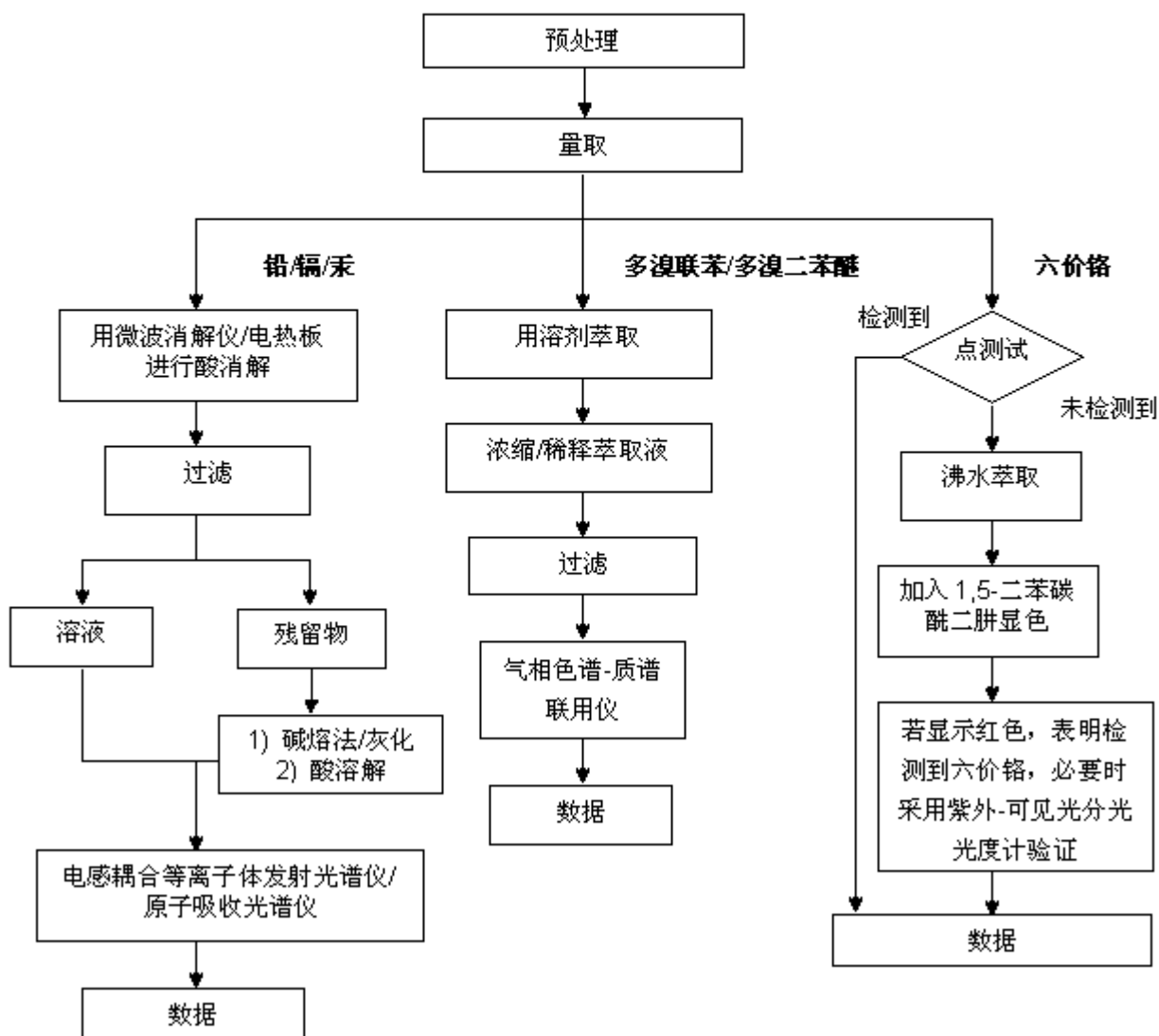
由于未获知样品的存储条件和生产日期, 样品的六价铬测试结果仅能代表测试时样品含六价铬的状态.

This document is issued by the Company subject to its General Conditions of Service printed overleaf, available on request or accessible at http://www.sgs.com/terms_and_conditions.htm and, for electronic format documents, subject to Terms and Conditions for Electronic Documents at www.sgs.com/terms_e-document.htm. Attention is drawn to the limitation of liability, indemnification and jurisdiction issues defined therein. Any holder of this document is advised that information contained hereon reflects the Company's findings at the time of its intervention only and within the limits of Client's instructions, if any. The Company's sole responsibility is to its Client and this document does not exonerate parties to a transaction from exercising all their rights and obligations under the transaction documents. This document cannot be reproduced except in full, without prior written approval of the Company. Any unauthorized alteration, forgery or falsification of the content or appearance of this document is unlawful and offenders may be prosecuted to the fullest extent of the law. Unless otherwise stated the results shown in this test report refer only to the sample(s) tested.

附件

铅/汞/六价铬/多溴联苯/多溴二苯醚测试流程图

- 1) 分析人员: 王富强/李忠号/姚凌峰
- 2) 项目负责人: 尹彦欣/朱敏
- 3) 样品按照下述流程被完全消解 (六价铬和多溴联苯/多溴二苯醚测试除外)



This document is issued by the Company subject to its General Conditions of Service printed overleaf, available on request or accessible at http://www.sgs.com/terms_and_conditions.htm and, for electronic format documents, subject to Terms and Conditions for Electronic Documents at www.sgs.com/terms_e-document.htm. Attention is drawn to the limitation of liability, indemnification and jurisdiction issues defined therein. Any holder of this document is advised that information contained hereon reflects the Company's findings at the time of its intervention only and within the limits of Client's instructions, if any. The Company's sole responsibility is to its Client and this document does not exonerate parties to a transaction from exercising all their rights and obligations under the transaction documents. This document cannot be reproduced except in full, without prior written approval of the Company. Any unauthorized alteration, forgery or falsification of the content or appearance of this document is unlawful and offenders may be prosecuted to the fullest extent of the law. Unless otherwise stated the results shown in this test report refer only to the sample(s) tested.

测试报告

No. TSNEC1300041402

日期: 2013年01月24日

第5页,共5页

样品照片:



此照片仅限于随SGS正本报告使用

*** 报告完 ***

This document is issued by the Company subject to its General Conditions of Service printed overleaf, available on request or accessible at http://www.sgs.com/terms_and_conditions.htm and, for electronic format documents, subject to Terms and Conditions for Electronic Documents at www.sgs.com/terms_e-document.htm. Attention is drawn to the limitation of liability, indemnification and jurisdiction issues defined therein. Any holder of this document is advised that information contained hereon reflects the Company's findings at the time of its intervention only and within the limits of Client's instructions, if any. The Company's sole responsibility is to its Client and this document does not exonerate parties to a transaction from exercising all their rights and obligations under the transaction documents. This document cannot be reproduced except in full, without prior written approval of the Company. Any unauthorized alteration, forgery or falsification of the content or appearance of this document is unlawful and offenders may be prosecuted to the fullest extent of the law. Unless otherwise stated the results shown in this test report refer only to the sample(s) tested.